



# MATWORKS

COMPREHENSIVE FLOORING SOLUTIONS

## Wyoming & Montana

Wyoming and Montana entryway carpet tiles deliver unmatched protection against Mother Nature's roughest elements. The hard-wearing carpet tiles are ideal for regions with harsh conditions that bring salt, sand, and extreme moisture. The highly durable blend of polypropylene and polyethylene terephthalate (PET) withstands high-traffic and is resistant to debris encrusting the fiber.

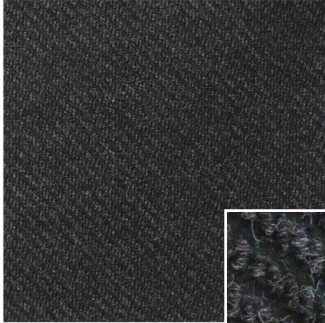


Designed to be laid with a quarter turn, these tiles create entryways that are as beautiful as they are durable.

# PRODUCT INFO

## Entrance Carpet Tile

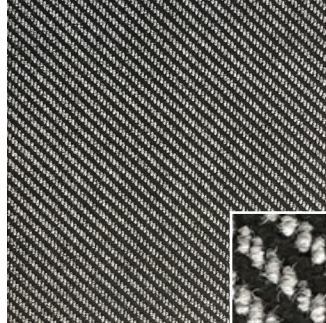
### Tile Options



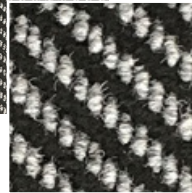
Wyoming



Charcoal



Montana



Silver/  
Charcoal



Montana Tile

| Specifications  |   |
|---|---|
| Size  | 19.69" x 19.69"   |
| Tiles Per Case  | 16  |
| Overall Thickness   | .35"  |
| Material  | Blend of polypropylene & polyethylene terephthalate (PET) |
| Material Weight   | 39 ounces/yard <sup>2</sup>                               |
| Backing   | Bitumen   |
| Installation  | Glue down   |
| Performance   | 5 years*<br><small>*Under normal use</small>              |
| 100% Customer Satisfaction*<br><small>*Based on the life of the product</small> |   |

### CLEANING INSTRUCTIONS

Matworks strongly recommends cleaning your carpet tiles daily to maintain functionality and appearance. The maintenance schedule should start on the installation date to achieve the maximum life expectancy of the product.

#### DAILY CLEANING:

- Vacuum daily with a commercial-grade vacuum cleaner with a rotary power brush or beater bar.

#### QUARTERLY MAINTENANCE:

- Use a high-performance, hot water extraction method a minimum of four times a year. Based on store traffic or environmental conditions such as increased salt, sand, and dirt, up to six times a year may be necessary.

